

Who made the salad ???

If you volunteered to make a salad for the teacher's lunch on Friday, please drop it off in the cafeteria Friday morning.



We could use a few more salads if you'd like to help.

Thank you Thank you Thank you

Contact April Vargas 827-5990 with questions.

REMINDER:

The New Law regarding Cell Phone Use in a SCHOOL ZONE applies to the parking lot!

If your vehicle is MOVING in the parking lot, YOU CANNOT BE ON YOUR CELL PHONE.

Please help keep our children safe.



Fish Fry Childcare

We are still looking for volunteers to help with Fish Fry childcare. Hours are 3pm - 8pm. Volunteers must have already taken Protecting Gods Children. Please sign up ASAP via the website or sign-up paper. Also, parents who are planning on dropping off their children, please sign-up on the website so we can get an idea of how many children will be attending.

It's almost Enrollment



time!

Tuition for next year is

attached.

available at www.factstuitionaid.com. Paper packets in English and Spanish are available in the office

Families of students currently receiving grants are reminded that all grants are for one year only. Everyone must re-apply.

Application deadline is February 15, 2010.
Notification of grant awards will be made by April 15th.

Great Job, 2nd Grade!

The second grade Reconciliation students learn the bible story about the woman who lost her coins, then rejoiced when they were found. Then they are asked, as they prepare for their first Reconciliation, to find lost coins and collect them in a can to be presented to Fr. Ric when they receive the sacrament. This year the kids collected a record \$475.10 – more than double what is usually collected!

Congratulations, 2nd Grade. We will pray for you as you prepare for First Communion.

Parking Lot Reminder



Please help speed up the drop off process:

- Pull all the way up to the cone. 3 cars can unload at once if we use the space.
- If you prefer to see your little one walk through the door, please park and walk him or her in. This keeps the flow moving better.
- Remember that people are also trying to park to get to work, mass, or to the school office. Please use the space available accordingly.
- Try doing goodbyes and kisses before you get in the car; then when you arrive, it's just out the door to start the school day.

Please complete your Fish Fry volunteer form and return it to the office ASAP.

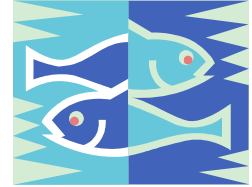
OR

To sign up to volunteer on-line:

Go to

<http://www.signupgenius.com/index.cfm?go=c.Signup&id=8606&mid=61595>

- *Click on "New Users" on upper right*
- *Fill in information*
- *On Green Tab on top, click on "Find a Sign Up"*
- *Enter the email "fishfry@stmarysschool.net "*
- *Choose the Fish Fry you would like to sign-up for.*



Contact Ray or Katrina Alvarado with any questions: katrina6578@aim.com

We have a last minute time and date change with Setup for 2/19 and 3/5. It is now on Friday from about 1pm – 4pm.

We still need help in these areas:

Kitchen Clean-Up – Cleaning dishes, kitchen floor, counters, etc.

Clean-up – General clean up.

Fish Frying

Dining

We are also in need of a **Mass Sale Coordinator** – organizes ticket sales at Mass, get people to sell tickets, turn in money, etc.

Thanks,

Ray



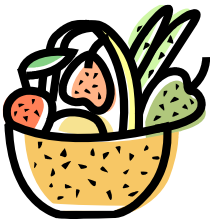
*****THE FIRST FISH FRY IS FAST APPROACHING*****

Each homeroom has chosen a theme to help fill Raffle Baskets.

Each St. Mary's student is asked to participate in donating an item for his/her homeroom raffle basket.

Please contact the room parent or teacher for your child(ren)'s homeroom with any questions.

Please send donated items or monetary donations with your child to give to the homeroom teacher by **February 11**.



HOMEROOM THEMES:

PK3- Fox 'n Hounds Spa

PK4- Road to Reading

K- Animals

1- Indoor Weekend Activities

2- St. Mary's School Theme

3- Movie Night

4- Crafts (a small Jean Day basket will also be assembled by room parents)

5- Reading

6- Funky Monkeys

7- Gardening

8- CCHS Sports



Tuition and Enrollment: 2010-2011

Kindergarten through 8th Grade

Enrollment Reservation Fee (non-refundable)	before March 18 th	\$100 per child
	after March 18 th	\$125 per child
Tuition for Parish Members	for one child	\$2840
	for two children	\$4680
	for three or more	\$6020

Participation Requirements: Active and Contributing Parishioner
 Regular Mass Attendance
 Participation in School and Parish Fundraisers
 25 Hours of School Service

Tuition for Non-Members \$4700 per child
 (based on 2009-2010 approximate cost per pupil)

Payment Options:

A. Payment in full at August Registration

or

B. Enroll in FACTS Tuition Payment Plan

1. Automatic, prescheduled payments from a checking or savings account.
2. Automatic, prescheduled credit card payments (additional fee required for this service).
3. Paper invoice permitting payment by check, money order, call in payment or on-line options.

Pre-Kindergarten

Enrollment Reservation Fee	before March 18 th	\$100 per child
	after March 18 th	\$125 per child

<u>Tuition:</u>	<u>Parish Member</u>	<u>Non-Member</u>
2 day	\$700	\$1000
3 day	\$1000	\$1300
4 day	\$1300	\$1600
5 day	\$1600	\$1900

(Multiple child discounts do not apply to the Pre-K program. Monthly payment options are available.)